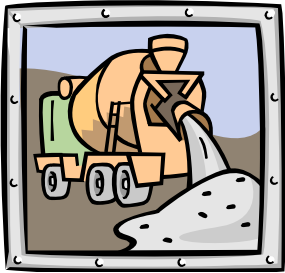


A City inspector must approve the approach prior to placement of the paving material. Reimbursement will be made based on paid receipts submitted upon completion of the project.

Once the drive has been paved, the resident is responsible for any maintenance of the approach.



How do I sign up?

Applications are available Monday through Friday 8:00 a.m. - 4:30 p.m. at the Division of Public Works Building, 1303 North Franklin Street. A permit to work in the right-of-way must be obtained at the time of application.

Please contact the Division of Public Works today at 779-5401 for additional information or to request an application.



City of Mt. Pleasant Division of Public Works

Street Department
and Motor Pool
Engineering Services
Wastewater Treatment
Water Department
Mt. Pleasant Municipal Airport

**1303 North Franklin Street
Mt. Pleasant MI 48858
(989) 779-5401**

Find us on the web at:
www.mt-pleasant.org

TIRED OF THAT GRAVEL DRIVEWAY?

PAVE AND SAVE WITH THE CITY



**A VOLUNTARY PROGRAM
FOR PAVING
GRAVEL DRIVE APPROACHES**

**in the
City of Mt. Pleasant**

Today

According to a 2006 review, there are approximately 650 gravel drive approaches on paved streets in Mt. Pleasant.

So what's the concern?

Gravel drive approaches can create real issues for municipalities. The Michigan Department of Environmental Quality has strict regulations concerning the disposal of street sweepings. Street sweepings that are collected by the City must be disposed of in a Class II sanitary landfill. Each year, the City of Mt. Pleasant spends approximately \$25,000 to dispose of the sweepings. In addition, the total annual cost of sweeping streets is approximately \$40,000.



A Typical Gravel Drive Approach

Not all this expense is due to gravel washing from driveways into the streets, but paving these approaches would have a significant impact on the amount of material that is deposited in streets, storm sewers and catch basins.

In addition, the U.S. Environmental Protection Agency is encouraging communities to increase maintenance efforts to improve the quality of storm water discharge by removing dirt particles from storm water runoff. Maintenance includes sweeping streets and cleaning catch basins. Paving gravel drive approaches is a recognized method of achieving this goal.

What will the City do?

The City Commission hopes to encourage private homeowners to pave the approach to their driveways. They have set up a voluntary program to cover 50% of the cost of paving a gravel drive approach up to a maximum of \$450.00.



A Paved Drive Approach

Who can participate?

The program is for any City resident with an existing gravel drive approach. It does not cover repaving existing approaches or new construction.

What are the guidelines? Gravel approaches must be paved with concrete or asphalt.

Residents may hire a contractor or do their own work. Labor and material expenses are eligible for reimbursement if a contractor is hired. Residents who do the work themselves will be reimbursed for materials only. All work must be completed according to City specifications.