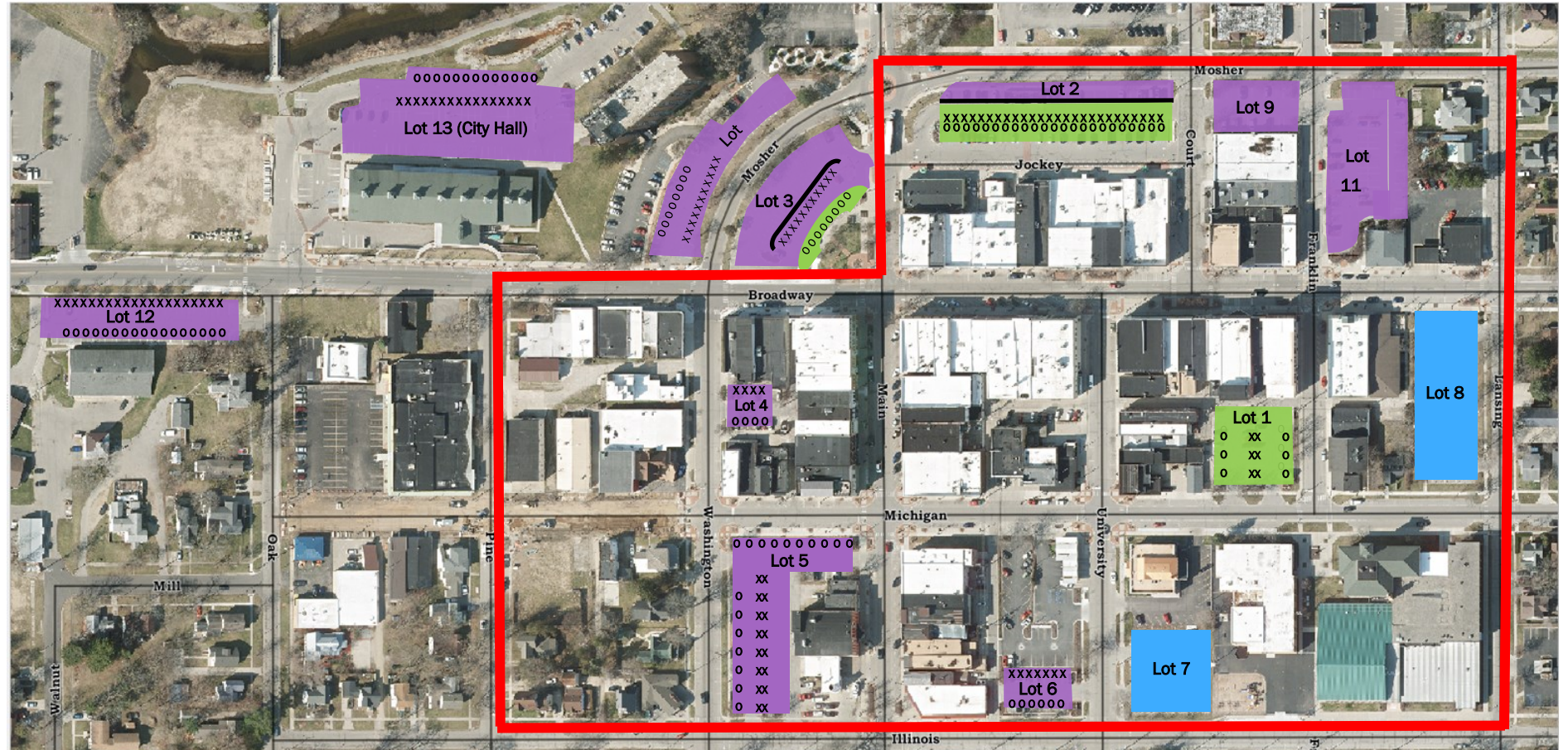


Downtown Mt. Pleasant Parking Areas

- There is no overnight on-street parking in the downtown area as depicted in the red box below.
- Overnight street parking is allowed throughout the rest of the City of Mt. Pleasant year-round. In these areas, when a snow emergency is declared, all cars must be removed from the street.

PARKING LOT DESIGNATIONS	
Lot 1	3-hour & Overnight*
Lot 2	3-hour, 10-hour & Overnight*
Lot 3	3-hour, 10-hour & Overnight*
Lot 4	10-hour & Overnight*
Lot 5	10-hour & Overnight*
Lot 6	10-hour & Overnight*
Lot 7	Permit (10-hour)
Lot 8	Permit (10-hour)
Lot 9	10-hour
Lot 10	10-hour & Overnight*
Lot 11	Permit & 10-hour
Lot 12	10-hour & Overnight*
Lot 13	10-hour & Overnight*
DAYTIME* PARKING KEY	
10-hour parking	
3-hour parking	
Permit Parking (10-hour)	
*Daytime parking is defined as 8:00 a.m. - 5:00 p.m.	



OVERNIGHT PARKING ON EVEN DAYS

XXXXXXXXXXXXXXXXXXXXXXXXXXXX

OVERNIGHT PARKING ON ODD DAYS

OOOOOOOOOOOOOOOOOOOOOOOO

* Lots 1, 2, 4, 5, 6, 10, 12 & 13 have designated areas for parking on odd and even days. Between 4:00 a.m. and 6:00 a.m., overnight permit holders must park in areas designated “even” on even days of the month (2nd, 4th, etc.). On odd days (1st, 3rd, etc.), vehicles must be parked in areas designated “odd”. The even or odd day is determined between the hours of 4:00 a.m. and 6:00 a.m. Therefore, permit holders must park on the “odd” side if the date is “odd” during the early morning hours (4:00-6:00 a.m.) of the following day, and on the “even” side if the date is “even” during the early morning hours (4:00 -6:00 a.m.) of the following day.

Questions on Parking?

Call 989-779-5347 for assistance.

