

DOWNTOWN PARKING INFORMATION

The City of Mt. Pleasant operates 13 municipal parking lots in downtown containing 782 parking spaces. Each parking lot is signed with the maximum permitted length of stay.

Additional parking is available on the street. All on-street parking is for three hours unless otherwise marked.

DAYTIME PARKING PERMITS

There are two designated daytime permit lots available for use. Permits for the lots are interchangeable and are available for downtown business and property owners, staff and commercial tenants at a cost of \$75 per year. Daytime permits lot locations:

- Lot #7, located at the NE corner of University and Illinois
- Lot #8, located on Lansing Street between Broadway and Michigan

GUEST PARKING

Guests of downtown residents are required to obtain an overnight guest parking permit to avoid ticketing. Guest parking passes are FREE and are limited to seven days. Guests should follow the “even/odd” parking rules as detailed below under the section “Overnight Parking.”

For further information, please call
City of Mt. Pleasant.
(989) 779-5347

OVERNIGHT PARKING

Overnight parking is allowed in municipal parking lots with a valid overnight parking permit and only in designated areas.

Live downtown and need a place to park overnight? Downtown has eight overnight parking lot options for you to choose from. Overnight permits are \$25 for six months and expire on June 30 and December 31 of each year.

Please note there is **NO parking allowed on downtown streets between 4:00 a.m. and 6:00 a.m.**

Lots 1, 2, 4, 5, 6, 10, 12 and 13 have designated overnight areas for parking on odd and even nights. Overnight permit holders must park in areas designated “even” on even days of the month (2nd, 4th, etc.). On odd days (1st, 3rd, etc.), vehicles must be parked in areas designated “odd.” The even or odd day is determined between the hours of 4:00 a.m. and 6:00 a.m.

Therefore, permit holders must park on the “odd” side if the date is “odd” during the early morning hours of the following day, and on the “even” side if the date is “even” during the early morning hours of the following day.

PURCHASING PERMITS

To purchase permits visit us online at www.mt-pleasant.org/downtownparking or visit us at city hall.

ELECTRIC CAR-CHARGING STATION

A ChargePoint charging station is located in parking lot #2 (also known as Jockey Alley), located on Mosher Street between Main and Court Street. There is no charge for use of the ChargePoint station.



ADA PARKING

Throughout the downtown you will find designated ADA spaces in parking lots and on-street for use by anyone with a valid ADA placard. On-street ADA spaces include the following locations:

- NW corner of Broadway and University
- NE corner of Main and Illinois

Use of ADA spaces are limited to vehicles that have handicap plates or temporary State of Michigan Handicap Parking Permit hang tags. Any vehicle without the appropriate handicap permit may be ticketed and towed.

Please note in the downtown area any vehicle not parked in

1. a lot designated for overnight parking, and
2. in the proper even or odd area, and
3. with a current permit properly displayed

may be subject to ticketing and/or towing.



Essential Information About Downtown Parking

A guide to parking in downtown Mt. Pleasant

To purchase permits visit us online at www.mt-pleasant.org/downtownparking or visit us at city hall.

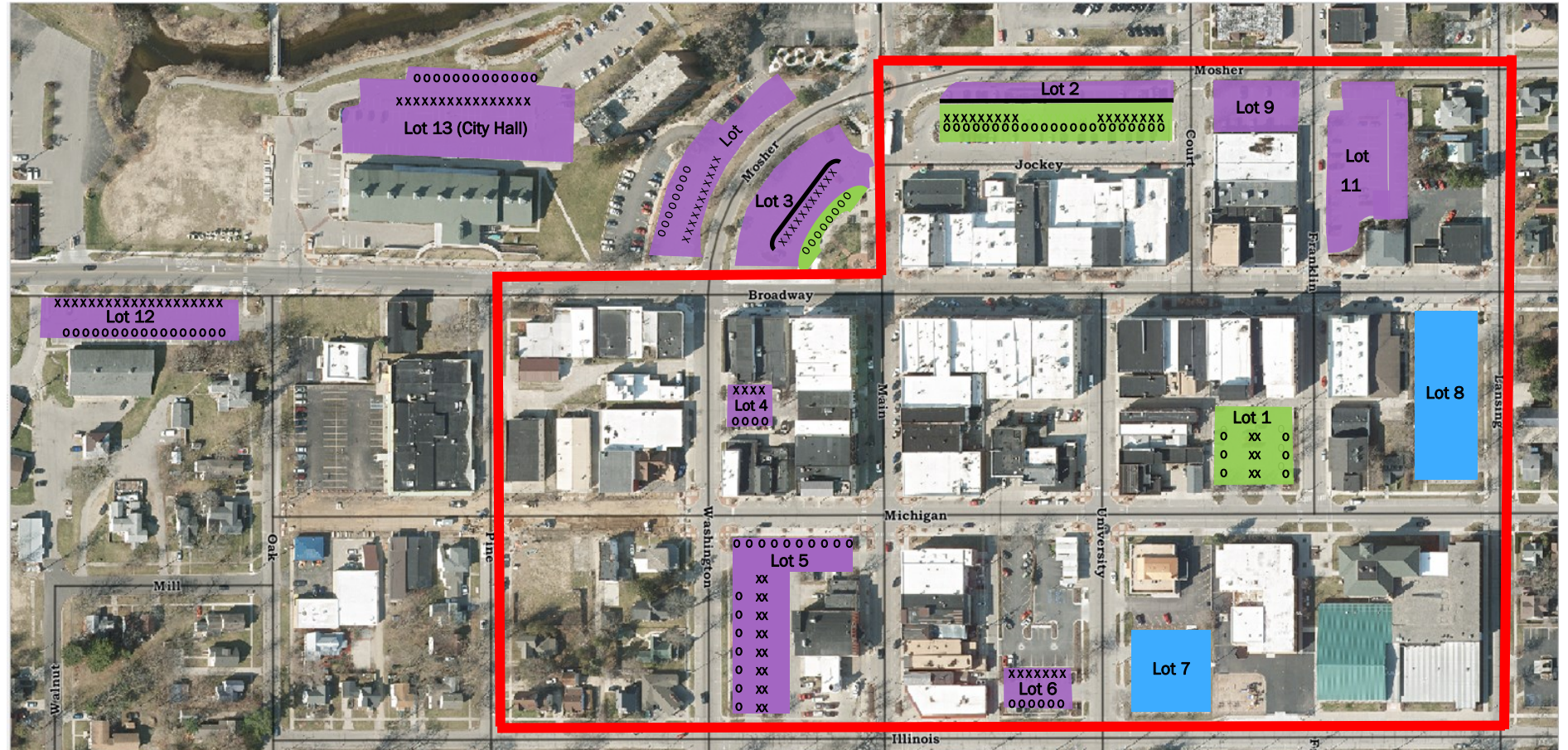
Mt. Pleasant
[meet here]

City of Mt. Pleasant
320 West Broadway
Mt. Pleasant, MI 48858
(989) 779-5347

Downtown Mt. Pleasant Parking Areas

- There is no overnight on-street parking in the downtown area as depicted in the red box below.
- Overnight street parking is allowed throughout the rest of the City of Mt. Pleasant year-round. In these areas, when a snow emergency is declared, all cars must be removed from the street.

PARKING LOT DESIGNATIONS	
Lot 1	3-hour & Overnight*
Lot 2	3-hour, 10-hour & Overnight*
Lot 3	3-hour, 10-hour & Overnight*
Lot 4	10-hour & Overnight*
Lot 5	10-hour & Overnight*
Lot 6	10-hour & Overnight*
Lot 7	Permit (10-hour)
Lot 8	Permit (10-hour)
Lot 9	10-hour
Lot 10	10-hour & Overnight*
Lot 11	Permit & 10-hour
Lot 12	10-hour & Overnight*
Lot 13	10-hour & Overnight*
DAYTIME* PARKING KEY	
10-hour parking	
3-hour parking	
Permit Parking (10-hour)	
*Daytime parking is defined as 8:00 a.m. - 5:00 p.m.	



OVERNIGHT PARKING ON EVEN DAYS

XXXXXXXXXXXXXXXXXXXXXXXXXXXX

OVERNIGHT PARKING ON ODD DAYS

OOOOOOOOOOOOOOOOOOOOOOOO

* Lots 1, 2, 4, 5, 6, 10, 12 & 13 have designated areas for parking on odd and even days. Between 4:00 a.m. and 6:00 a.m., overnight permit holders must park in areas designated “even” on even days of the month (2nd, 4th, etc.). On odd days (1st, 3rd, etc.), vehicles must be parked in areas designated “odd”. The even or odd day is determined between the hours of 4:00 a.m. and 6:00 a.m. Therefore, permit holders must park on the “odd” side if the date is “odd” during the early morning hours (4:00-6:00 a.m.) of the following day, and on the “even” side if the date is “even” during the early morning hours (4:00 -6:00 a.m.) of the following day.

Questions on Parking?

Call 989-779-5347 for assistance.

